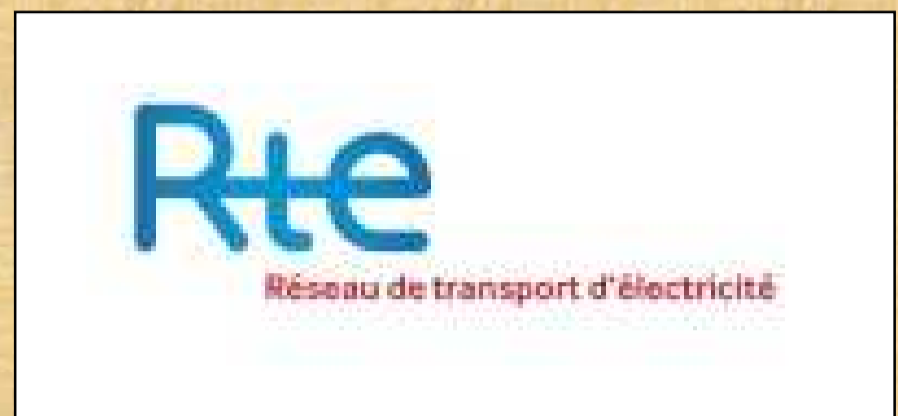




LIFE ELIA-RTE project

Creating green corridors under overheads lines

Route of LIFE Wallonia (ELIA) - France (RTE)

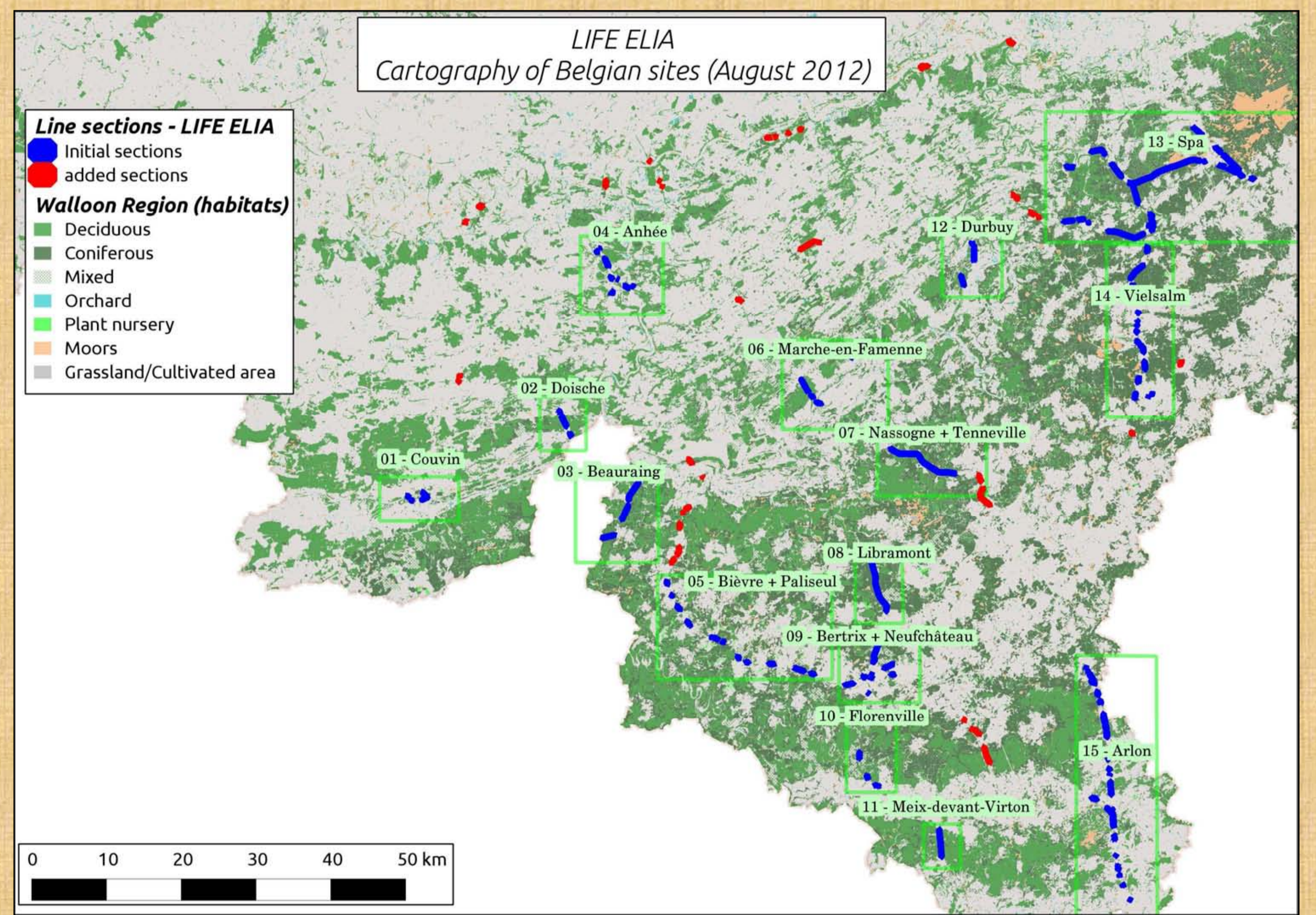


Objectives

Presentation of tracks met in Belgium (Wallonia) and France. Ensuring to cover a maximum of biogeographic European territories.

In Wallonia

130 kilometers of high-voltage lines were selected. From these, 49.1 km are located in Natura 2000 sites, 18.3 km are included in the network of sites of great biological interest and 56 km are under the forest regime. The management of these corridors will be integrated into the management plans relating to the status of sites in which they are included. Distributed within large forest, they provide continuity between neighboring open habitats.



In France

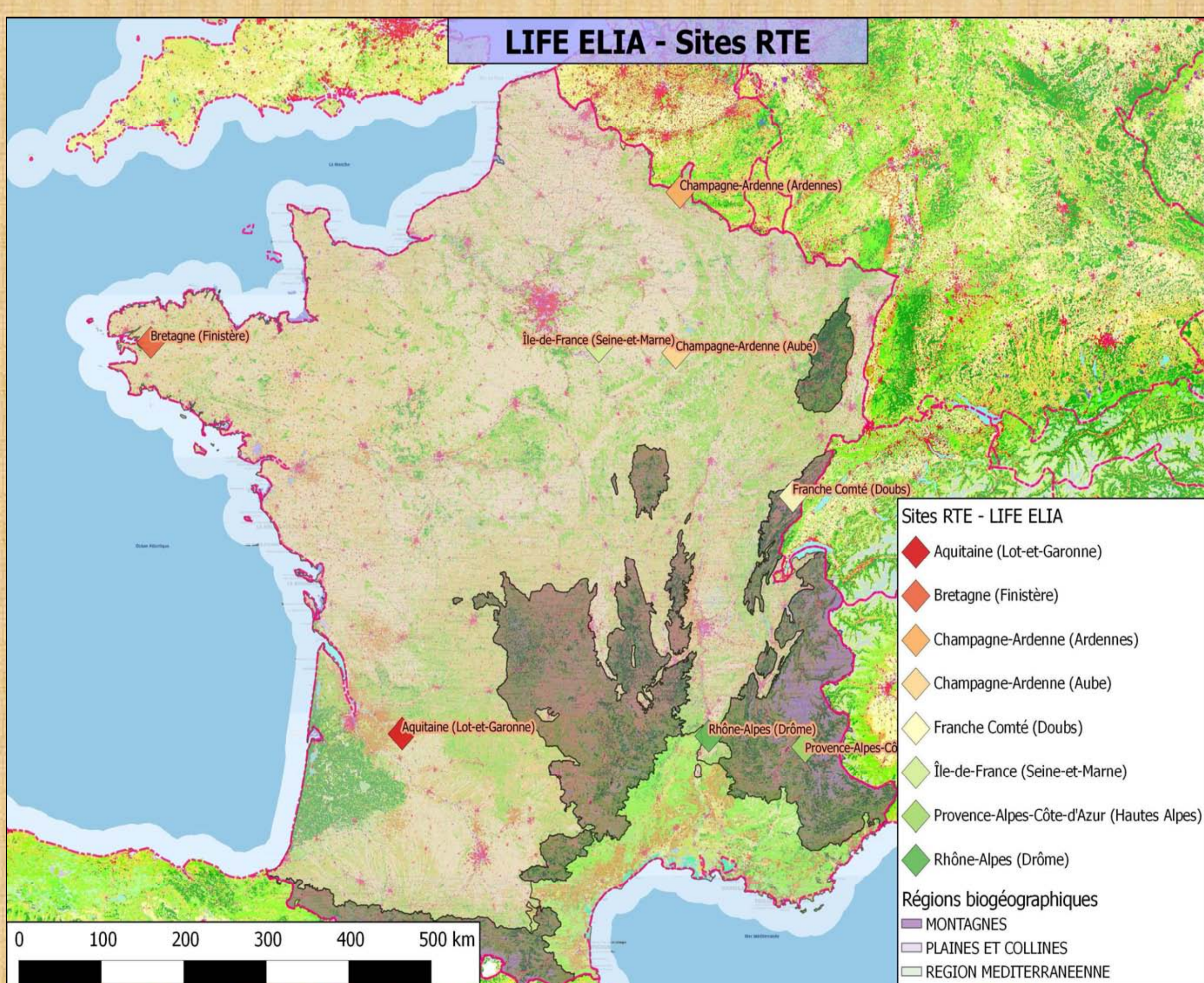
The sites that will be managed, were chosen to cover the four biogeographic zones across the country.

They were targeted in relation to the value of the sites in terms of habitats and species.

The location of these sites induces a variety of potential partners in the project (National Parks, State Parks, 'Conservatoires', National Forest Office, naturalists associations, hunters, national museum of natural sciences, farmers, beekeepers, ...)

They offer the possibility of implementing different types of restoration work.

Moreover, high-voltage lines selected in France are located in seven regions corresponding to different decentralized RTE units.



Actions implemented on the French sites

- Ardennes: bog + edges / heathland + ponds
- Dawn: grazing
- Doubs: grazing
- Drome: ponds + invasive species
- Finistère: ponds + pasture + edges
- Alps: edges + pasture + ponds
- Lot-et-Garonne: ponds
- Seine-et-Marne: grazing / mowing + invasive species



The LIFE ELIA project is co-financed by the European Commission

